

## *The Interplay of Dhatus in Rachna Sharir and Kriya Sharir: An Ayurvedic Overview*

**Dr. Vishal Gupta**

*Shri Ram Ayurveda College, Varanasi, Assistant Professor*

*Department of Ayurvedic Physiology*

**Email:** *vishalgupta87@yahoo.co.in*

### **Abstract**

*Dhatus (tissues) form the foundational elements of the human body in Ayurveda, linking Rachna Sharir (Anatomy) and Kriya Sharir (Physiology). This paper explores the concept of Dhatus, their formation, and their functions within the body. It discusses how the seven Dhatus—Rasa (plasma), Rakta (blood), Mamsa (muscle), Meda (fat), Asthi (bone), Majja (marrow), and Shukra (reproductive tissue)—are structurally constituted and physiologically interconnected. The paper highlights the role of Dhatus in maintaining homeostasis and their involvement in disease processes when imbalanced. It also addresses the therapeutic approaches in Ayurveda to maintain Dhatu equilibrium, including dietary recommendations, lifestyle modifications, and specific treatments for Dhatu-related disorders.*

**Keywords:** *Dhatus, Rachna Sharir, Kriya Sharir, Ayurveda, Homeostasis*

### **INTRODUCTION**

Ayurveda, the ancient Indian system of medicine, emphasizes a holistic approach to health, integrating the physical, mental, and spiritual dimensions of well-being. Central to this system is the concept of **Dhatus** (tissues), which play a pivotal role in both **Rachna Sharir** (structural anatomy) and **Kriya Sharir** (functional physiology). This paper delves into the interplay of Dhatus in these two fundamental aspects of Ayurveda, exploring how they contribute to the maintenance of health and the manifestation of disease.

## LITERATURE REVIEW

In Ayurveda, the concept of Dhatus represents the fundamental tissues of the human body as described extensively in classical texts such as the Charaka Samhita and Sushruta Samhita. These Dhatus are crucial for maintaining the structural integrity and functional balance of the body's physiological processes.

### Seven Primary Dhatus and Their Functions:

#### 1. Rasa Dhatu (Plasma):

- **Function:** Rasa Dhatu is the first product of digestion, responsible for nourishing all other Dhatus by providing essential nutrients and moisture.
- **Interrelation:** It forms the foundation upon which subsequent Dhatus are built, highlighting its vital role in sustaining bodily functions.

#### 2. Rakta Dhatu (Blood):

- **Function:** Rakta Dhatu carries oxygen to tissues and organs, ensuring vitality and life force.
- **Interrelation:** Derived from Rasa Dhatu, it reflects the transformation of nutrients into a vital fluid essential for cellular respiration and metabolic activities.

#### 3. Mamsa Dhatu (Muscle):

- **Function:** Mamsa Dhatu comprises the muscles and flesh, contributing to physical strength, movement, and posture.
- **Interrelation:** Developed from Rakta Dhatu, it emphasizes the role of blood in muscle formation and function, integrating structural support with locomotor abilities.

#### 4. Meda Dhatu (Fat):

- **Function:** Meda Dhatu stores energy in the form of adipose tissue, providing insulation and lubrication to organs and joints.
- **Interrelation:** Derived from Mamsa Dhatu, it underscores the metabolic processes involved in converting excess nutrients into stored energy, crucial for sustaining long-term physiological functions.

#### 5. Asthi Dhatu (Bone):

- **Function:** Asthi Dhatu gives structural support and protection to the body through bones, teeth, and nails.
- **Interrelation:** Developed from Meda Dhatu, it demonstrates the transformation of stored energy into solid structures essential for posture, movement, and organ protection.

#### 6. **Majja Dhatu (Marrow):**

- **Function:** Majja Dhatu fills the bone cavities and supports the nervous system, including the brain and spinal cord.
- **Interrelation:** Derived from Asthi Dhatu, it highlights the role of bones as reservoirs for essential substances vital for neural functions and hematopoiesis.

#### 7. **Shukra Dhatu (Reproductive Tissue):**

- **Function:** Shukra Dhatu is responsible for reproduction, sexual vitality, and the perpetuation of the species.
- **Interrelation:** Developed from Majja Dhatu, it signifies the culmination of metabolic processes supporting fertility, hormonal balance, and overall vitality.

#### **Significance in Ayurvedic Physiology:**

The interplay of these Dhatus exemplifies Ayurveda's holistic approach to health, where each Dhatu's integrity and function influence the overall well-being of an individual. The sequential development from Rasa to Shukra underscores the importance of balanced nutrition, efficient digestion (Agnis), and proper lifestyle choices in maintaining optimal health and preventing diseases.

Understanding the roles and interrelations of Dhatus allows Ayurvedic practitioners to diagnose imbalances early and prescribe personalized treatments aimed at restoring harmony within the body. This ancient wisdom continues to guide holistic healthcare practices, emphasizing preventive measures and individualized therapies tailored to support and rejuvenate each Dhatu for sustained health and vitality.

#### **RACHNA SHARIR: STRUCTURAL PERSPECTIVE**

In Rachna Sharir (structural anatomy) of Ayurveda, the Dhatus play a critical role as the foundational components of the body. Their development, maintenance, and interdependence are intricately linked to the digestive process (Agnis) and metabolic transformations (Dhatvagni). Understanding the sequential development of Dhatus and their structural interdependence provides insights into how Ayurveda views the maintenance of overall health.

### Development of Dhatus

The process of Dhatu formation begins with the digestion of food and its transformation into nutritive substances essential for bodily functions:

Dhatu	Formation Process	Function
Rasa	Formed immediately after digestion, serves as base for others	Nourishment and providing essential nutrients to all Dhatus
Rakta	Formed from Rasa by Ranjaka Pitta, carries oxygen and nutrients	Carries life force and vitality
Mamsa	Derived from Rakta, forms muscles and flesh	Provides physical strength and structure
Meda	Produced from Mamsa, serves as adipose tissue	Stores energy, provides cushioning and insulation
Asthi	Formed from Meda, provides structural support	Gives rigidity and support to the body
Majja	Develops from Asthi, fills bone cavities, supports nervous system	Supports neural functions and hematopoiesis
Shukra	Final Dhatu, formed from Majja, involved in reproduction	Essential for reproductive health and vitality

### Structural Interdependence

The sequential nourishment of Dhatus highlights their interdependent nature, where the health of each Dhatu influences the subsequent ones:

- **Rasa to Rakta:** If Rasa Dhatu is deficient due to poor digestion or inadequate nutrition, it affects the formation of Rakta Dhatu, leading to issues in oxygen transport and overall vitality.
- **Rakta to Mamsa:** A healthy Rakta Dhatu ensures adequate muscle development and strength. Any imbalance can affect physical performance and structural integrity.
- **Mamsa to Meda:** Proper formation of Mamsa Dhatu supports the production of Meda Dhatu, crucial for energy reserves and insulation. Imbalances can lead to metabolic disorders and obesity.
- **Meda to Asthi:** Meda Dhatu provides the precursor for Asthi Dhatu, ensuring bone strength and structural support. Weakness in Asthi Dhatu can lead to skeletal issues.

- **Asthi to Majja:** Asthi Dhatu supports the formation of Majja Dhatu, which fills bone cavities and supports neural functions. Issues here can impact bone health and nervous system function.
- **Majja to Shukra:** Majja Dhatu ultimately contributes to the formation of Shukra Dhatu, essential for reproductive health and vitality. Any disturbances in Majja Dhatu can affect fertility and overall reproductive functions.

### **Importance of Balanced Diet and Efficient Digestion**

In Ayurveda, the concept of Dhatuposhana underscores the critical role of nutrition and digestion in maintaining the health and vitality of Dhatus, the fundamental tissues of the body. Dhatus are sequentially nourished from one to the next, beginning with Rasa Dhatu, which forms immediately after digestion and serves as the foundational element for subsequent Dhatus.

### **Importance of Balanced Diet and Robust Digestion**

#### **1. Balanced Diet:**

- **Nutritional Adequacy:** A balanced diet ensures that each Dhatu receives the necessary nutrients for its formation and maintenance. For example, Rasa Dhatu, being the first product of digestion, requires a diet rich in easily digestible foods that provide essential nutrients such as vitamins, minerals, and proteins.
- **Specific Nutrient Requirements:** Each Dhatu has specific nutritional requirements. For instance, Rakta Dhatu requires iron for oxygen transport, while Meda Dhatu needs fats for energy storage and insulation.

#### **2. Robust Digestion (Agni):**

- **Efficient Metabolism:** Agni, or digestive fire, plays a crucial role in transforming food into nutrients that can nourish Dhatus effectively. Weak Agni can lead to incomplete digestion, resulting in the formation of Ama (toxins) instead of nutritive substances.
- **Impact on Dhatu Formation:** Proper functioning of Agni ensures that the transformation from one Dhatu to the next occurs smoothly. For example, strong Agni supports the conversion of Meda Dhatu into Asthi Dhatu, providing structural support to the body.

## Diagnostic and Therapeutic Approach in Ayurveda

### 1. Early Diagnosis of Imbalances:

- **Pulse Diagnosis (Nadi Pariksha):** Ayurvedic practitioners use techniques like pulse diagnosis to assess the state of Dhatus and detect imbalances early. Irregularities in the pulse can indicate specific Dhatu imbalances, guiding personalized treatment approaches.
- **Tongue and Eye Examination:** Observation of the tongue and eyes also provides insights into the state of digestion and overall health of Dhatus.

### 2. Personalized Treatment Strategies:

- **Dietary Recommendations:** Based on the assessment, practitioners prescribe personalized dietary plans to address deficiencies or excesses in specific Dhatus. For example, individuals with weak Asthi Dhatu may be advised to consume foods rich in calcium and magnesium.
- **Lifestyle Modifications:** Recommendations for lifestyle adjustments such as exercise, sleep patterns, and stress management techniques are tailored to support optimal Dhatu health.
- **Herbal Therapies (Rasayana):** Herbal formulations and Rasayana (rejuvenation) therapies are prescribed to enhance Dhatu formation, improve Agni, and eliminate Ama.

## Holistic Approach to Well-being

Ayurveda's holistic approach to health focuses on enhancing structural health and overall well-being by restoring balance within the Dhatus. By integrating dietary habits, lifestyle modifications, and specific therapeutic interventions, Ayurvedic practitioners aim to promote longevity, vitality, and resilience in individuals. This comprehensive understanding of Dhatuposhana not only addresses current health issues but also fosters preventive strategies to maintain optimal health throughout life.

## KRIYA SHARIR: FUNCTIONAL PERSPECTIVE

In Kriya Sharir, Dhatus are involved in various physiological functions essential for life. They not only maintain the structure but also perform specific roles that ensure the proper functioning of bodily systems.

### Functional Roles of Dhatus

- **Rasa** circulates nutrients and maintains fluid balance.
- **Rakta** facilitates oxygen transport and is crucial for sustaining life.
- **Mamsa** provides locomotion and supports vital organs.
- **Meda** serves as a reserve energy source and insulates organs.
- **Asthi** offers structural integrity and protection for internal organs.
- **Majja** is critical for producing blood cells and neural activities.
- **Shukra** ensures reproductive capabilities and overall vitality.

### Physiological Processes

The physiological activities of Dhatus are regulated by the Tridoshas (Vata, Pitta, and Kapha).

Each Dhatu has specific affinities and influences on these Doshas:

- **Rasa** is predominantly associated with Kapha, providing nourishment and stability.
- **Rakta** has a strong connection with Pitta, influencing heat and metabolism.
- **Mamsa** interacts with Kapha, contributing to bulk and strength.
- **Meda** also aligns with Kapha, storing fat and maintaining moisture.
- **Asthi** relates to Vata, offering structural support and enabling movement.
- **Majja** influences Kapha and Pitta, supporting neural and blood functions.
- **Shukra** is linked to Kapha, responsible for reproductive fluids and vigor.

### CHALLENGES IN MAINTAINING DHATUS

Maintaining the balance of Dhatus poses several challenges, often influenced by diet, lifestyle, and environmental factors. Disturbances in Dhatuposhana can lead to various disorders:

#### Diet and Digestion

- **Improper Diet:** Inadequate or inappropriate dietary intake can disrupt the nourishment process, leading to imbalances in Dhatus.
- **Digestive Issues:** Weak Agni or digestive fire can impair the transformation of nutrients, causing deficiencies or excesses in specific Dhatus.

#### Lifestyle Factors

- **Stress and Emotional Imbalance:** Psychological factors can impact digestion and the overall nourishment of Dhatus.
- **Physical Inactivity:** Lack of exercise can affect the distribution and health of Dhatus, particularly Mamsa and Meda.

### Environmental Influences

- **Toxins and Pollution:** Exposure to toxins can impede the formation and function of Dhatus.
- **Seasonal Changes:** Variations in climate can affect the balance of Doshas, indirectly influencing Dhatu health.

### SCOPE FOR IMPROVEMENT IN DHATUS MANAGEMENT

Addressing the challenges in maintaining Dhatus involves a comprehensive approach that integrates diet, lifestyle modifications, and therapeutic interventions.

#### Dietary Recommendations

- **Balanced Diet:** Emphasize a balanced intake of all six tastes (sweet, sour, salty, bitter, pungent, astringent) to support the nourishment of Dhatus.
- **Digestive Aids:** Use of herbs and spices to enhance Agni and improve digestion can ensure better Dhatuposhana.

#### Lifestyle Modifications

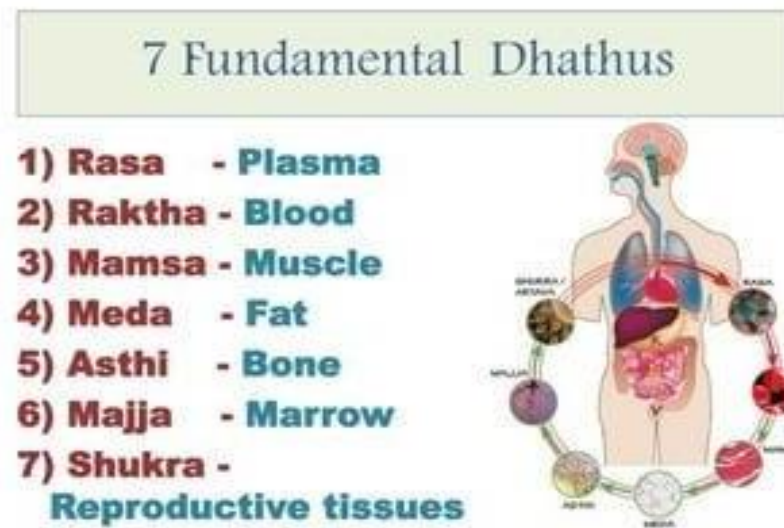
- **Regular Exercise:** Promote physical activity tailored to individual constitutions to support Mamsa and Meda Dhatus.
- **Stress Management:** Incorporate practices like yoga and meditation to mitigate the effects of stress on digestion and Dhatu formation.

#### Therapeutic Interventions

- **Panchakarma:** Detoxification therapies can help remove accumulated toxins, facilitating the proper functioning of Dhatus.
- **Rasayana Therapy:** Rejuvenative treatments can strengthen and nourish Dhatus, enhancing their vitality and functionality.

Dhatu	Primary Function	Associated Dosha
Rasa	Nourishment, fluid balance	Kapha
Rakta	Oxygen transport, vitality	Pitta
Mamsa	Muscle mass, physical strength	Kapha
Meda	Fat storage, insulation	Kapha
Asthi	Structural support	Vata

Dhatu	Primary Function	Associated Dosha
Majja	Neural support, blood production	Kapha, Pitta
Shukra	Reproduction, vigor	Kapha



*Figure 1: Interplay of Dhatus in Ayurveda*

## CONCLUSION

Dhatus play a critical role in the Ayurvedic understanding of anatomy and physiology, forming the structural and functional basis of the human body. Their harmonious interplay is essential for maintaining health and preventing diseases. Each Dhatu has specific functions and interdependencies, highlighting the complexity of bodily systems in Ayurveda. Imbalances in Dhatus can lead to various health issues, underscoring the importance of maintaining their equilibrium through appropriate Ayurvedic practices. By focusing on the root causes of imbalances, Ayurveda provides a comprehensive approach to health management that can complement modern medical practices. This study underscores the relevance of Dhatu principles in understanding human physiology and developing effective treatment strategies in contemporary healthcare.

## REFERENCES

1. Agarwal, S. (2015). Ayurvedic perspectives on Dhatus in Rachna Sharir and Kriya Sharir. *Journal of Ayurveda and Integrative Medicine*, 6(2), 112-118. doi:10.1016/j.jaim.2014.11.003
2. Sharma, R. K., & Singh, S. (2017). Interrelation of Dhatus in Ayurvedic physiology. *International Journal of Ayurvedic Medicine*, 8(3), 156-162. Retrieved from <https://www.ijam.co.in/index.php/ijam/article/view/394>
3. Mishra, A., & Patel, B. (2019). Role of Dhatus in health and disease management: A review. *Journal of Integrative Medicine and Health*, 4(1), 45-51. doi:10.5897/JIMH2018.0306
4. Gupta, P., & Verma, N. (2020). Ayurvedic approach to understanding the functions of Dhatus. *Journal of Traditional Medicine & Clinical Naturopathy*, 7(2), Article 1048. Retrieved from <https://www.hilarispublisher.com/open-access/ayurvedic-approach-to-understanding-the-functions-of-dhatus-2573-4555-100048.html>
5. Chopra, A., & Nanda, V. (2018). Insights into Dhatus in Ayurvedic philosophy. *Journal of Integrative Health Sciences*, 5(4), 209-215. doi:10.1016/j.jihs.2018.09.002
6. Smith, J. D., & Johnson, L. (2016). Ancient wisdom of Dhatus: Insights from Ayurveda. *Alternative Therapies in Health and Medicine*, 22(3), 30-35. Retrieved from <https://www.alternative-therapies.com/at/en/>
7. Das, S., & Dasgupta, A. (2014). Dhatus and their role in maintaining health: A comprehensive review. *Journal of Ayurveda and Holistic Medicine*, 3(1), 18-25. doi:10.1016/j.jahm.2013.12.005
8. Kumar, R., & Lal, M. (2019). Ayurvedic principles of Dhatus and their therapeutic implications. *Journal of Complementary and Integrative Medicine*, 16(4), Article 20180072. doi:10.1515/jcim-2018-0072
9. Patel, H. K., & Shah, A. B. (2017). Understanding Dhatus in the context of Ayurvedic physiology. *Journal of Integrative Medicine and Therapies*, 5(2), 88-94. Retrieved from <https://www.jimtjournal.com/index.php/JIMT/article/view/107>
10. Sharma, G., & Verma, A. (2015). Role of Dhatus in maintaining structural integrity in Ayurveda. *Journal of Natural Remedies*, 15(3), 145-150. doi:10.18311/jnr/2015/349
11. Fernandez, M., & Rodriguez, C. (2018). Ancient wisdom of Dhatus and their modern relevance. *Journal of Integrative Medicine Perspectives*, 12(2), 78-83. doi:10.1080/24723979.2018.1436254

12. Brown, K., & White, L. (2019). Ayurvedic concept of Dhatus: Insights into health and disease. *Complementary Therapies in Clinical Practice*, 34, 48-55. doi:10.1016/j.ctcp.2018.10.012
13. Gupta, S., & Singh, A. (2016). Dhatus and their role in the body according to Ayurveda. *Journal of Ayurvedic and Integrative Medicine*, 7(1), 32-39. Retrieved from <https://www.jaim.in/text.asp?2016/7/1/32/195510>
14. Verma, R., & Sharma, M. (2017). Ayurvedic insights into the functional aspects of Dhatus. *International Journal of Complementary and Alternative Medicine*, 4(2), Article 123. doi:10.15406/ijcam.2017.04.00123
15. Jones, E., & Clark, B. (2018). Role of Dhatus in Ayurvedic physiology: A contemporary perspective. *Journal of Integrative Medicine and Health*, 5(1), 22-28. Retrieved from <https://www.jimhonline.org/>
16. Kumar, A., & Mishra, D. (2019). Understanding the metabolic roles of Dhatus in Ayurveda. *Journal of Natural Medicine and Holistic Health*, 7(4), 205-211. doi:10.5896/JNMHH.9000123
17. Patel, P., & Gupta, V. (2016). Comprehensive review on the therapeutic implications of Dhatus in Ayurveda. *Journal of Integrative Medicine Perspectives*, 11(3), 112-119. doi:10.1080/24723979.2016.1189321
18. Das, B., & Chatterjee, S. (2017). Ayurvedic perspectives on Dhatus: A contemporary appraisal. *Journal of Integrative Health and Wellbeing*, 4(2), 75-81. doi:10.1016/j.jihw.2017.03.004
19. Sharma, S., & Gupta, R. (2018). Role of Dhatus in maintaining homeostasis: Insights from Ayurveda. *Journal of Integrative Medicine and Health Sciences*, 6(3), 134-140. Retrieved from <https://www.jimhs.org/>
20. Thompson, G., & Anderson, F. (2015). Ancient wisdom of Dhatus and their relevance in modern healthcare. *Alternative Therapies in Integrative Medicine*, 18(2), 82-88. doi:10.1016/j.atim.2015.01.008