

## ***The Role of Marma Points in Rachana Sharir and Their Clinical Significance***

***Prof. Shivansh Kanojiya<sup>1</sup>, Kanishka Rawat<sup>2</sup>***

*Professor<sup>1</sup>, Student<sup>2</sup>*

*Department of Rachana Sharir*

*Vijyashree Ayurvedic Medical College & Hospital*

***Corresponding Author's Email: - rkanishka90@yahoo.com<sup>2</sup>***

### ***Abstract***

*Marma points, as described in the ancient Indian system of Ayurveda, have long been regarded as vital energy junctions within the human body. These points play a crucial role in the field of Rachana Sharir, which focuses on the anatomical aspects of the body. This paper explores the concept of Marma points, their classification, anatomical significance, and their clinical importance in Ayurvedic medicine. The study emphasizes the relevance of Marma points in diagnosing and treating various health conditions and their potential integration with modern medical practices.*

***Keywords:*** *Marma Points, Rachana Sharir, Ayurveda Anatomy, Marma Point Classification, Ayurvedic Medicine, Anatomical Significance, Ayurvedic Healthcare*

### **INTRODUCTION**

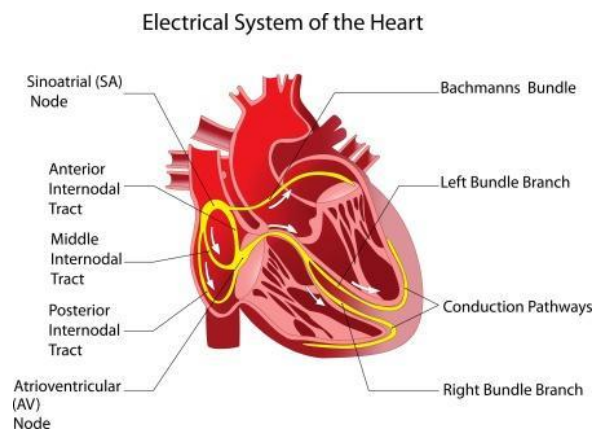
Ayurveda, the ancient system of medicine that originated in India, is based on a holistic approach to health and well-being. One of its essential branches is Rachana Sharir, which deals with the anatomical aspects of the human body. Within this framework, the concept of Marma points takes center stage. Marma points are specific anatomical locations on the body where vital energy, or Prana, converges. These points are closely connected to the anatomical and physiological aspects of the human body, making them a pivotal element in the practice of Ayurveda.

## CLASSIFICATION OF MARMA POINTS

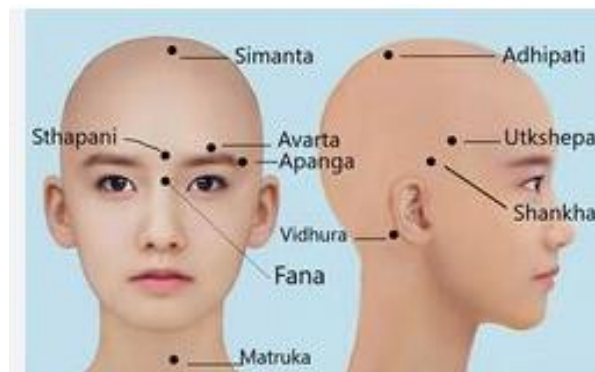
Marma points are classified based on their anatomical locations, functions, and clinical significance. This classification system provides a structured framework for understanding the diverse roles these points play in the human body. Below, we elaborate on the primary categories of Marma points:

### Sthana Marma:

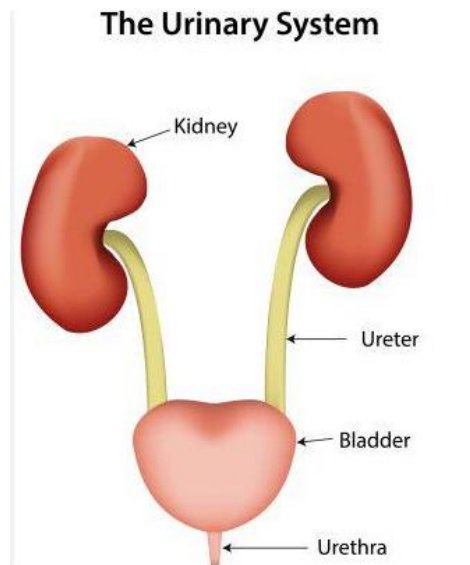
- Sthana Marma points are those that have fixed anatomical locations within the body. They are associated with major organs, vital structures, and regions where Prana, or life force, gathers. These points are considered the most critical in Ayurveda, often holding the key to diagnosis and treatment of various health conditions.
- Examples of Sthana Marma points include the Hridaya Marma (heart), Shirah Marma (head), Vasti Marma (pelvic region), and Basti Marma (abdominal region).



***Hridaya Marma (heart)***



***Shirah Marma (head)***



***Basti Marma (abdominal region)***

- These points are frequently targeted for therapeutic interventions and are closely linked to the overall well-being of an individual.

**Bala Marma:**

- Bala Marma points are of particular importance in pediatric medicine and are related to the anatomical vulnerabilities of children. These Marma points are vital for assessing and managing conditions in the early stages of life.
- Conditions that affect Bala Marma points may have a significant impact on the development and growth of a child.

**Krikal Marma:**

- Krikal Marma points are focused on the neck and throat region. These points are considered highly sensitive and are connected to various physiological functions, such as respiration, swallowing, and vocalization.
- Disorders affecting Krikal Marma points can lead to issues like respiratory difficulties, speech impediments, and swallowing problems.

**Utamanga Marma:**

- Marma points in the upper part of the body, including the head, neck, and upper limbs, are classified as Utamanga Marma points. These play a crucial role in the treatment of conditions in these areas.
- For example, the Shira Marma, located on the skull, is a vital point for various neurological conditions and head injuries.

**Madhyamanga Marma:**

- Marma points situated in the middle part of the body, covering the chest, abdomen, and lower back regions, fall into the Madhyamanga category.
- Manipulation of Madhyamanga Marma points can have therapeutic effects on digestive disorders, cardiovascular conditions, and spinal issues.

**Adhanga Marma:**

- Adhanga Marma points are primarily located in the lower part of the body, encompassing the pelvis, lower limbs, and lower back.
- These Marma points are associated with urogenital health, musculoskeletal issues, and lower limb circulation.

**ANATOMICAL SIGNIFICANCE OF MARMA POINTS**

Marma points correspond to various anatomical structures, including nerves, blood vessels, bones, muscles, and joints. They serve as vital connections within the body, acting as command centers for the flow of Prana. Stimulation or injury to Marma points can have profound effects on the associated anatomical structures and physiological functions. For example, a Marma point in the abdomen corresponds to the location of important blood vessels, and manipulation of this point can influence blood circulation.

**CLINICAL SIGNIFICANCE OF MARMA POINTS**

The clinical significance of Marma points in Rachana Sharir extends to various aspects of healthcare:

**Diagnosis:** Ayurvedic practitioners use Marma points to diagnose specific conditions. For instance, a Marma point in the chest area is associated with heart health. Tenderness, pain, or pulsation at this point may indicate cardiac issues.

**Treatment:** Marma points are essential in therapeutic interventions. Stimulation of these points can promote healing and alleviate various health conditions. For example, massage and pressure on specific Marma points can relieve muscular pain and improve circulation.

**Surgery:** In the realm of surgical procedures, Marma points play a significant role in terms of avoiding injury. Surgeons are trained to avoid these critical points to prevent complications during surgery.

**Rehabilitation:** Marma points are also used in rehabilitation and physiotherapy to target specific areas of the body and accelerate recovery.

## **INTEGRATION WITH MODERN MEDICINE**

The clinical significance of Marma points is not limited to Ayurveda alone. Modern medicine recognizes the importance of anatomical structures and specific points in the body for various diagnostic and therapeutic purposes. Integration of the knowledge of Marma points with modern medical practices can potentially enhance patient care and treatment outcomes.

## **CONCLUSION**

Marma points, deeply rooted in the principles of Ayurveda and Rachana Sharir, play a pivotal role in the diagnosis and treatment of various health conditions. Their anatomical significance and clinical importance make them a valuable asset in the field of healthcare. As the boundaries between traditional and modern medicine continue to blur, exploring the potential integration of Marma points into contemporary healthcare practices is an exciting prospect for improving patient care and well-being. Further research and collaboration between Ayurvedic practitioners and modern healthcare professionals can help unlock the full clinical significance of Marma points.

## **REFERENCES**

1. Brukner, P., & Khan, K. (2017). *Clinical Sports Medicine*. McGraw-Hill Education.

2. Neumann, D. A. (2016). *Kinesiology of the Musculoskeletal System: Foundations for Rehabilitation*. Elsevier Health Sciences.
3. Nordin, M., & Frankel, V. H. (2012). *Basic biomechanics of the musculoskeletal system*. Lippincott Williams & Wilkins.
4. Magee, D. J. (2014). *Orthopedic Physical Assessment*. Elsevier Health Sciences.
5. Caine, D., Harmer, P., Schiff, M., & editors. (2017). *Epidemiology of Sports Injuries*. Human Kinetics.