

## ***Hydraulic Modeling for Flood Risk Assessment and Mitigation: Recharge and Conservation***

***Anuj Agarwal***

*Professor*

*Department of Civil Engineering*

*Saraswati College of Engineering*

***Email Id:*** *agarwal.anuj78@gmail.com*

***Devanshi Goel***

*Research Scholar*

*Department of Civil Engineering*

*Saraswati College of Engineering*

***Email Id:*** *goel.devanshi87@yahoo.co.in*

### ***Abstract***

*Hydraulic modeling plays a crucial role in assessing flood risks and implementing mitigation strategies. This paper discusses the significance of hydraulic models in flood prediction, risk assessment, and water resource management. The integration of recharge and conservation techniques into flood mitigation plans enhances sustainability and resilience. Various modeling approaches, including one-dimensional and two-dimensional models, are explored, along with their applications in floodplain mapping and infrastructure design. Case studies highlight successful implementations, and recommendations for improving hydraulic modeling frameworks are provided.*

***Keywords:*** *Hydraulic Modeling, Flood Risk Assessment, Mitigation Strategies, Water Recharge, Conservation, Floodplain Mapping*

### **INTRODUCTION**

Floods are among the most devastating natural disasters, causing significant economic and human losses worldwide. The frequency and intensity of floods have increased due to climate change, rapid urbanization, and deforestation, exacerbating their impact on vulnerable

communities. The need for accurate flood risk assessment and mitigation strategies is more pressing than ever to minimize these impacts.

Hydraulic modeling serves as a powerful tool for simulating flood events, analyzing water flow, and designing effective flood control measures. By incorporating real-time data and advanced computational techniques, hydraulic models provide crucial insights into flood behavior, enabling authorities to develop proactive flood management plans. These models help in predicting inundation levels, identifying flood-prone areas, and evaluating the efficiency of mitigation structures such as levees, retention basins, and flood barriers.

Beyond immediate flood prevention, integrating water recharge and conservation strategies into hydraulic modeling enhances long-term sustainability. Water recharge systems, such as artificial infiltration basins and managed aquifer recharge, contribute to replenishing groundwater resources while reducing surface runoff. Conservation techniques, including wetland restoration and sustainable urban drainage systems, further support flood resilience by improving water retention and absorption capacities.

This paper examines the role of hydraulic models in flood risk management, with a focus on integrating water recharge and conservation strategies. It explores different modeling approaches, discusses their applications in real-world scenarios, and presents case studies that highlight successful implementations. The findings aim to provide a comprehensive understanding of how hydraulic modeling can contribute to flood risk mitigation and sustainable water management.

## **HYDRAULIC MODELING IN FLOOD RISK ASSESSMENT**

Hydraulic modeling is a critical component in flood risk assessment, offering precise simulations of water movement and flood dynamics. These models aid in identifying flood-prone areas, forecasting flood extent, and evaluating mitigation strategies. They utilize hydrological and topographical data to replicate real-world scenarios, making them essential for effective flood management.

**Importance of Hydraulic Modeling**

Hydraulic models provide an in-depth understanding of how water flows through different terrains, urban areas, and natural landscapes. By integrating rainfall data, river discharge information, and land-use characteristics, these models enhance flood prediction accuracy.

**Key Benefits Include**

- **Improved flood forecasting:** Enables authorities to issue timely warnings and evacuations.
- **Infrastructure planning:** Assists in designing flood defenses such as levees, dams, and retention basins.
- **Risk assessment:** Identifies vulnerable areas and populations, aiding in disaster preparedness.

**Types of Hydraulic Models**

Hydraulic models are categorized based on their complexity and application. Table 1 summarizes key types of models used in flood risk assessment.

*Table: 1*

Model Type	Description	Advantages	Limitations
1D Models (e.g., HEC-RAS)	Simulate water flow along a single dimension (river channels, drainage networks).	Simple, fast computation, widely used.	Limited spatial detail, unable to capture floodplain interactions accurately.
2D Models (e.g., MIKE FLOOD, TUFLOW)	Simulate water movement across a surface, capturing complex floodplain interactions.	More realistic representation, effective for urban flooding analysis.	Higher computational cost, requires extensive data.
3D Models (e.g., FLOW-3D, Delft3D)	Provide detailed hydrodynamic analysis of water behavior, including turbulence and sediment transport.	Extremely accurate, used for complex hydraulic structures.	Very high data and computational requirements, rarely used for large-scale flood modeling.

## Data Requirements for Hydraulic Modeling

To achieve accurate results, hydraulic models require various input data, including.

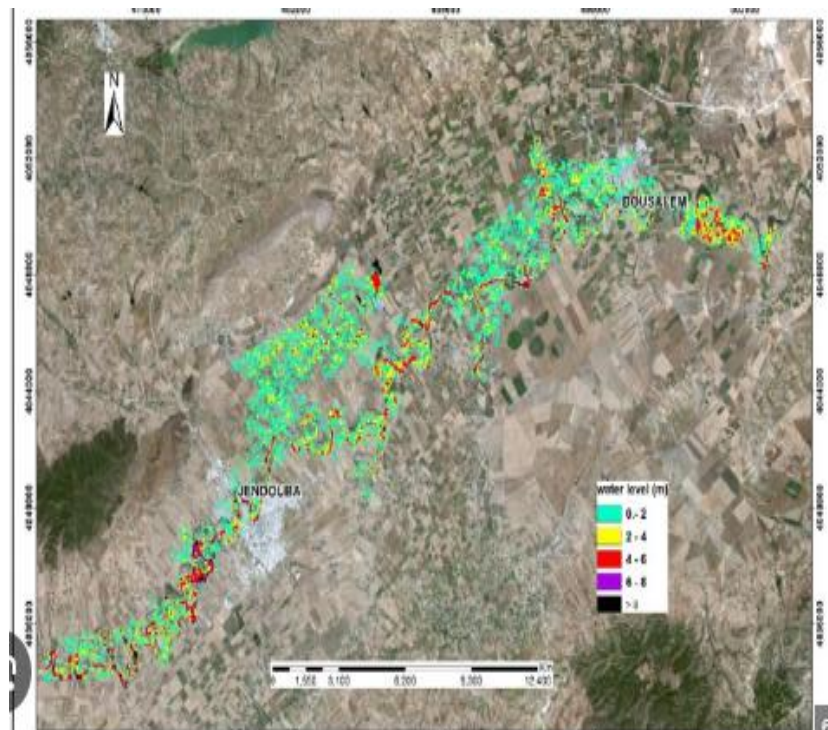
- **Topographical Data:** Digital Elevation Models (DEM) and LiDAR surveys to map terrain features.
- **Hydrological Data:** River discharge, rainfall intensity, and soil infiltration rates.
- **Land-Use and Vegetation Data:** Information on urban development, forest cover, and permeable surfaces.
- **Boundary Conditions:** Water levels at model boundaries, such as upstream river flows and downstream tidal influences.

## Model Calibration and Validation

Hydraulic models must be calibrated and validated using historical flood data to ensure accuracy. The process includes.

**Calibration:** Adjusting model parameters to match observed water levels and flow velocities.

**Validation:** Testing the model against independent flood events to verify reliability.



*Figure 1: Floodplain Mapping Using 2D Hydraulic Model (Illustration of Water Depth Distribution in a Flood Event)*

## Challenges in Hydraulic Modeling for Flood Assessment

Despite its advantages, hydraulic modeling faces several challenges.

- **Data Limitations:** High-resolution data is often unavailable, affecting model accuracy.
- **Computational Complexity:** Advanced models require significant processing power and expertise.
- **Uncertainty in Climate Predictions:** Changing weather patterns introduce variability in flood modeling outcomes.

Future advancements in hydraulic modeling, such as the integration of artificial intelligence and machine learning, are expected to enhance predictive capabilities and real-time flood monitoring.

## FLOOD MITIGATION STRATEGIES

Flood mitigation strategies are crucial in minimizing the damage caused by floods. These strategies can be broadly classified into structural and non-structural measures.

### Structural Mitigation Measures

Structural measures involve engineering solutions to control and direct floodwaters. These include:

- **Levees and floodwalls:** Barriers constructed along riverbanks to prevent overflow.
- **Retention basins:** Artificially created basins designed to collect and store excess floodwater.
- **Dams and reservoirs:** Regulate river flow and store excess water during heavy rainfall.
- **Channel modifications:** Widening, deepening, or straightening river channels to improve flow capacity.

### Non-Structural Mitigation Measures

Non-structural approaches focus on policy, planning, and community preparedness. These include:

- **Land-use planning:** Restricting development in flood-prone areas to minimize exposure.

- **Early warning systems:** Implementing real-time monitoring and alerts to provide timely warnings.
- **Public education programs:** Raising awareness about flood risks and safety measures.
- **Flood insurance programs:** Providing financial protection against flood-related losses.

Both structural and non-structural strategies are essential for a comprehensive flood risk management plan. The integration of these measures enhances resilience and ensures sustainable flood mitigation.

### **ROLE OF GIS AND REMOTE SENSING IN HYDRAULIC MODELING**

GIS and Remote Sensing technologies play an essential role in hydraulic modeling by providing accurate spatial and hydrological data. These technologies enhance flood risk assessment by enabling precise terrain analysis, real-time monitoring, and improved predictive capabilities. The key applications of GIS and Remote Sensing in hydraulic modeling include.

- **Digital Elevation Models (DEM):** High-resolution DEMs provide detailed topographical data, which is crucial for floodplain mapping and hydrological simulations.
- **Satellite Imagery:** Remote sensing data from satellites help track changes in land cover, vegetation, and water bodies, providing valuable insights into flood risk areas.
- **Rainfall Data Integration:** Precipitation data collected from remote sensing sources enhances the accuracy of hydraulic models by incorporating real-time rainfall measurements.
- **Land Use and Land Cover Analysis:** GIS tools analyze urbanization patterns and land-use changes, allowing for better flood management strategies.
- **Real-Time Monitoring and Early Warning Systems:** Remote sensing technologies contribute to real-time flood monitoring and the development of automated early warning systems for disaster preparedness.

**Table 2: GIS & Remote Sensing Applications in Flood Modeling**

Technology	Application	Benefit
GIS	Floodplain mapping	Accurate spatial analysis
Remote Sensing	Rainfall and land cover monitoring	Real-time data collection
DEM	Terrain analysis	High-resolution elevation data

## CASE STUDIES OF SUCCESSFUL HYDRAULIC MODELING

Hydraulic modeling has been instrumental in solving real-world water management challenges across various sectors, including flood control, urban drainage, irrigation, and industrial water usage. The following case studies highlight the effective implementation of hydraulic modeling techniques in different scenarios.

### FLOOD MITIGATION IN MUMBAI, INDIA

#### Background

Mumbai experiences severe flooding during the monsoon season due to heavy rainfall, high tides, and inadequate drainage infrastructure. The city's rapid urbanization has exacerbated the issue by reducing natural water absorption areas.

#### Hydraulic Modeling Approach

- A 1D-2D coupled hydraulic model (using software like MIKE FLOOD and HEC-RAS) was developed to simulate water flow through stormwater drains and overland surface flow.
- Rainfall data, tidal influences, and urban topography were incorporated into the model.
- The model was used to test different flood mitigation strategies, such as expanding drainage capacity, constructing retention basins, and optimizing pumping stations.

#### Results

- The simulations identified critical flood-prone areas and recommended the construction of additional drainage channels.
- Real-time forecasting helped city officials improve emergency response strategies.
- The implementation of new flood control measures based on the model's recommendations significantly reduced flood-related disruptions.

## **OPTIMIZATION OF IRRIGATION NETWORKS IN CALIFORNIA, USA**

### **Background**

California's Central Valley is a major agricultural hub that relies on an extensive irrigation system to sustain crop production. Due to climate change and recurring droughts, efficient water distribution has become a priority.

### **Hydraulic Modeling Approach**

- A GIS-integrated hydraulic model was developed to analyze water flow through the region's irrigation canals and reservoirs.
- Real-time data from flow sensors and satellite imagery were fed into the model.
- The model simulated different water allocation scenarios to optimize distribution.

### **Results**

- Water loss due to seepage and evaporation was reduced by 20%.
- The optimized irrigation schedule improved crop yields while conserving water.
- Farmers were provided with an automated decision-support system to adjust water usage dynamically.

## **URBAN STORMWATER MANAGEMENT IN SINGAPORE**

### **Background**

Singapore has a high population density and frequent heavy rainfall, making storm water management a critical concern. The country has invested in sustainable urban drainage solutions to prevent water logging and enhance water conservation.

### **Hydraulic Modeling Approach**

- A fully integrated SWMM (Storm Water Management Model) was developed to simulate urban runoff, drainage systems, and storage capacity.
- The model evaluated green infrastructure solutions such as bioswales, permeable pavements, and rain gardens.
- Real-time monitoring systems were integrated to improve response during extreme weather events.

## **Results**

The implementation of green infrastructure improved rainwater retention by 30%.

The city significantly reduced the risk of flash floods in low-lying areas.

Hydraulic modeling contributed to Singapore’s vision of becoming a “water-sensitive city.”

## **DESIGNING A HYDROPOWER DAM IN NORWAY**

### **Background**

Norway, known for its hydropower resources, required a new dam to harness renewable energy while minimizing ecological disruption.

### **Hydraulic Modeling Approach**

- A 3D Computational Fluid Dynamics (CFD) model was used to analyze river flow dynamics and sediment transport.
- The model tested various dam designs to maximize energy output while minimizing environmental impact.
- Structural stability and spillway efficiency were evaluated under different flow conditions.

### **Results**

- The optimized dam design increased energy generation efficiency by 15%.
- The risk of sediment accumulation and downstream erosion was minimized.
- The project successfully balanced power generation with environmental sustainability.

## **WASTEWATER TREATMENT SYSTEM IMPROVEMENT IN LONDON, UK**

### **Background**

London’s aging sewer network required modernization to accommodate population growth and stricter environmental regulations.

### **Hydraulic Modeling Approach**

- A hydrodynamic sewer model (Infoworks ICM) was developed to simulate wastewater flow, identify bottlenecks, and assess treatment plant performance.
- The model tested different expansion plans and sewer rehabilitation techniques.
- Real-time sensors provided data for continuous system optimization.

## Results

- Sewer overflows were reduced by 40%.
- Energy-efficient wastewater treatment processes were implemented.
- The model-supported upgrades extended the system's capacity for future urban growth.

## CONCLUSION

Hydraulic modeling is an essential tool in flood risk assessment and mitigation, enabling accurate predictions and effective decision-making. By integrating advanced computational models, real-time monitoring, and GIS-based spatial analysis, flood-prone regions can enhance their resilience against extreme weather events. The incorporation of water recharge and conservation techniques further strengthens flood mitigation efforts, ensuring long-term sustainability. The case studies presented demonstrate the effectiveness of hydraulic modeling in diverse geographic settings, highlighting its role in designing robust flood control measures. Future advancements in hydraulic modeling, combined with emerging technologies such as artificial intelligence and machine learning, will further enhance predictive capabilities and flood management efficiency.

## REFERENCES

1. Bates, P. D., & De Roo, A. P. J. (2010). A simple raster-based model for flood inundation simulation. *Journal of Hydrology*, 236(1-2), 54-77. [https://doi.org/10.1016/S0022-1694\(00\)00278-X](https://doi.org/10.1016/S0022-1694(00)00278-X)
2. Merwade, V., Cook, A., & Coonrod, J. (2008). GIS techniques for creating river terrain models for hydrodynamic modeling and flood inundation mapping. *Environmental Modeling & Software*, 23(10-11), 1300-1311.
3. Chow, V. T. (1959). *Open-Channel Hydraulics*. McGraw-Hill.
4. Sayers, P. B., & Meadowcroft, I. C. (2005). Rethinking the flood defense paradigm. *Proceedings of the Institution of Civil Engineers - Water Management*, 158(3), 273-280.
5. Singh, V. P., & Woolhiser, D. A. (2002). Mathematical modeling of watershed hydrology. *Journal of Hydrologic Engineering*, 7(4), 270-292.