
Neonatal Care and Common Newborn Disorders: A Comprehensive Nursing Approach to Early Life Survival

Sneha Joseph¹, Meenakshi Pillai², Ravi Prakash³

Students^{1,2}, Lecturer³

Department of Pediatric Nursing

Aditya College of Nursing

Corresponding Author Email: joseph.sneha45@yahoo.co.in¹

DOI: <https://doi.org/10.5281/zenodo.20067863>

ABSTRACT

Neonatal care is a critical component of pediatric healthcare aimed at ensuring the survival and healthy development of newborns during the first 28 days of life. This period is highly vulnerable, with a significant proportion of infant mortality occurring during this time. Proper neonatal care includes thermal regulation, feeding, infection prevention, and early identification of disorders. This paper explores essential aspects of neonatal care and common newborn disorders such as neonatal jaundice, respiratory distress syndrome, infections, and low birth weight complications. It emphasizes the role of nurses in providing evidence-based care, early diagnosis, and timely interventions. The integration of community-based approaches and national health programs is also discussed.

KEYWORDS: *Neonatal Care, Newborn Disorders, Neonatal Nursing, Infant Health, Early Intervention*

INTRODUCTION

The neonatal period, defined as the first 28 days of life, is a crucial phase for a child's survival and development. Globally, neonatal mortality accounts for a significant proportion of under-five deaths. In India, improving neonatal care remains a priority to achieve better child health outcomes.

Newborns are highly susceptible to infections, temperature instability, and feeding difficulties. Early detection and management of these conditions are essential. Nurses play a central role in providing continuous care, monitoring, and educating caregivers.

CONCEPT OF NEONATAL CARE

Neonatal care involves the comprehensive management of newborns to ensure their survival and well-being.

Key Components

- Thermal protection
- Adequate nutrition (breastfeeding)
- Infection prevention
- Monitoring vital signs
- Early detection of abnormalities

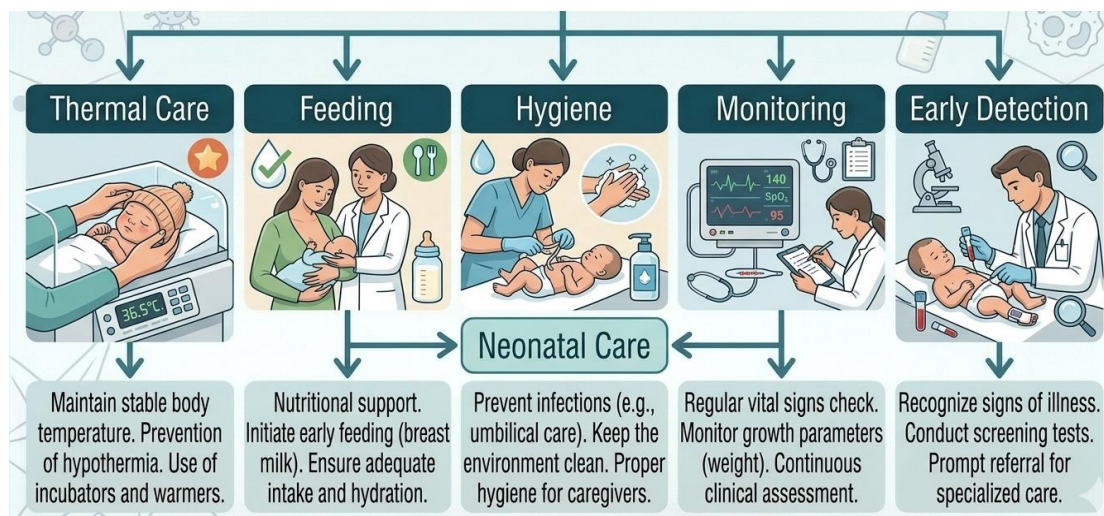


Figure 1: Components of Neonatal Care

ESSENTIAL NEWBORN CARE PRACTICES

1. Immediate Care at Birth

- Clearing airway
- Drying and warming
- Initiating breastfeeding within 1 hour
- Cord care

2. Routine Care

- Daily hygiene
- Monitoring weight and temperature
- Immunization (BCG, OPV, Hep B)

CLASSIFICATION OF NEWBORNS

Newborns can be classified based on:

1. Birth Weight

| Category | Weight (kg) |
|-----------------------|-------------|
| Normal | ≥ 2.5 |
| Low Birth Weight | < 2.5 |
| Very Low Birth Weight | < 1.5 |

2. Gestational Age

- Preterm (<37 weeks)
- Term (37–42 weeks)
- Post-term (>42 weeks)

COMMON NEWBORN DISORDERS

1. Neonatal Jaundice

- Yellow discoloration due to bilirubin accumulation
- Common in the first week of life

2. Respiratory Distress Syndrome (RDS)

- Difficulty in breathing due to immature lungs
- Common in preterm infants

3. Neonatal Infections

- Sepsis, pneumonia, meningitis
- Caused by bacterial or viral pathogens

4. Hypothermia

- Low body temperature due to inadequate thermal care

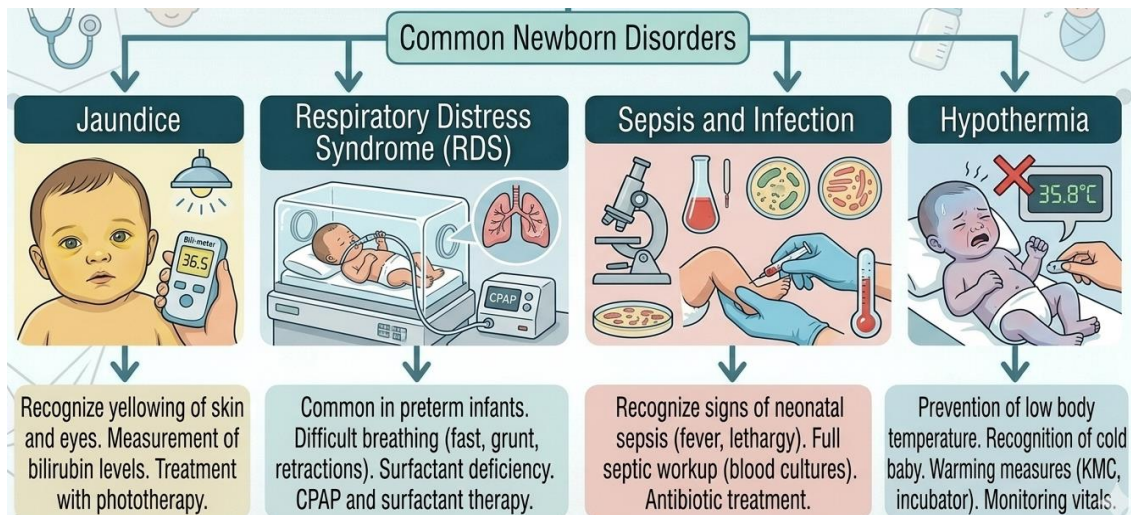


Figure 2: Common Newborn Disorders

ASSESSMENT OF THE NEWBORN

1. APGAR Score

| Parameter | Score 0 | Score 1 | Score 2 |
|-----------------|---------|-----------|------------|
| Heart Rate | Absent | <100 | >100 |
| Respiration | Absent | Slow | Good |
| Muscle Tone | Limp | Weak | Active |
| Reflex Response | None | Grimace | Cry |
| Color | Blue | Pink body | Fully pink |

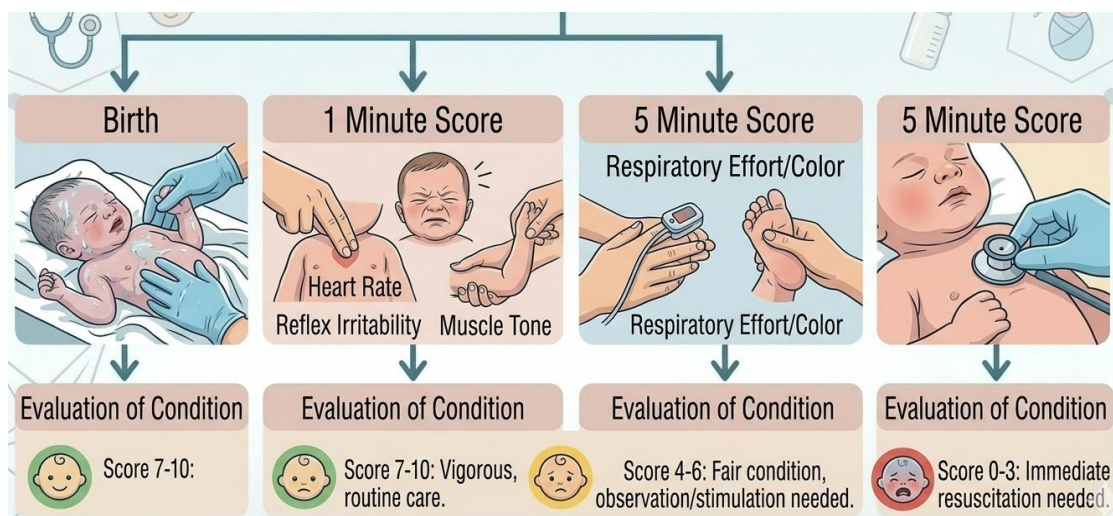


Figure 3: APGAR Assessment Flow

THERMAL REGULATION IN NEWBORNS

Newborns lose heat rapidly and require special care:

- Use of warm blankets
- Skin-to-skin contact (Kangaroo Mother Care)
- Maintaining room temperature

BREASTFEEDING AND NUTRITION

- Initiate breastfeeding within 1 hour
- Exclusive breastfeeding for 6 months
- Provides immunity and nutrition

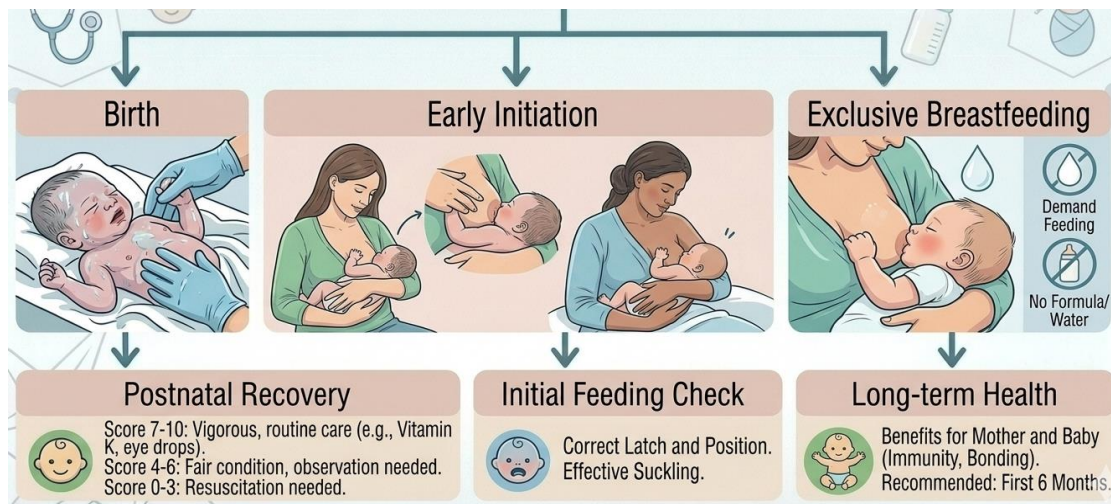


Figure 4: Breastfeeding Cycle

ROLE OF NURSES IN NEONATAL CARE

- Monitor vital signs
- Assist in feeding
- Maintain hygiene
- Educate mothers
- Identify early signs of illness

INFECTION PREVENTION

- Hand hygiene
- Sterile techniques

- Proper cord care
- Limiting exposure to infections

CHALLENGES IN NEONATAL CARE

- Lack of healthcare facilities
- Poor awareness among caregivers
- Socioeconomic barriers
- Shortage of trained professionals

IMPORTANCE OF EARLY DETECTION

Early diagnosis helps in:

- Reducing mortality
- Preventing complications
- Improving long-term outcomes

MANAGEMENT OF COMMON NEWBORN DISORDERS

Effective management of neonatal disorders requires prompt diagnosis and appropriate interventions.

1. Management of Neonatal Jaundice

- Phototherapy to reduce bilirubin levels
- Monitoring serum bilirubin levels
- Encouraging frequent breastfeeding
- Exchange transfusion in severe cases

2. Management of Respiratory Distress Syndrome (RDS)

- Oxygen therapy
- Continuous Positive Airway Pressure (CPAP)
- Mechanical ventilation in severe cases
- Administration of surfactant

3. Management of Neonatal Infections

- Early administration of antibiotics

- Maintaining aseptic conditions
- Monitoring vital signs
- Supportive care

4. Management of Hypothermia

- Immediate warming using radiant warmers
- Skin-to-skin contact (Kangaroo Mother Care)
- Maintaining room temperature

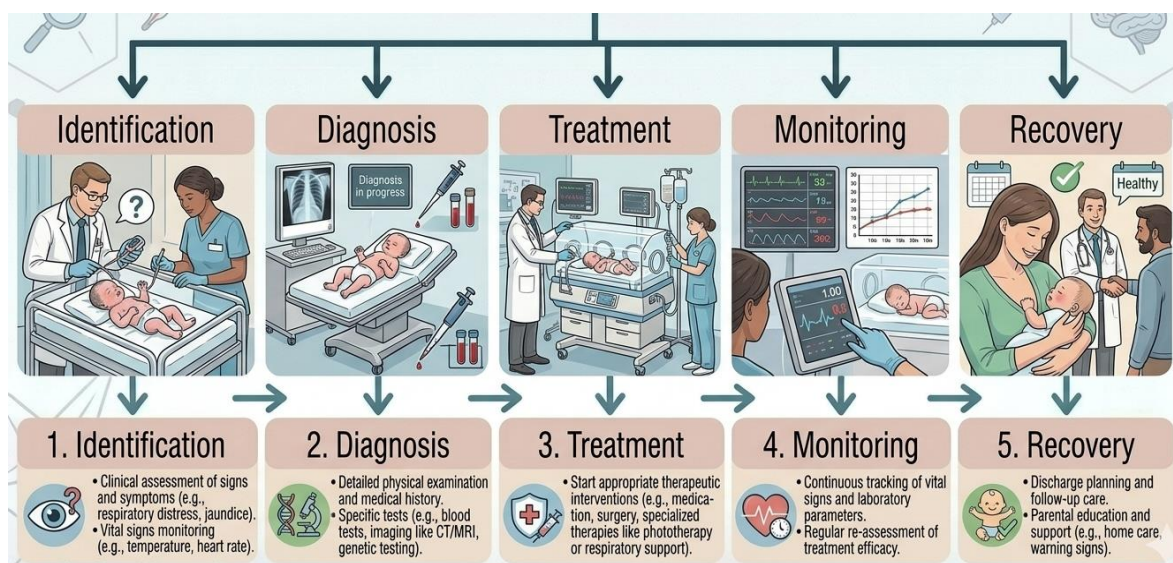


Figure 5: Management Flow of Newborn Disorders

ADVANCED NEONATAL CARE TECHNIQUES

Advancements in neonatal care have improved survival rates:

1. Neonatal Intensive Care Units (NICU)

- Specialized care for critically ill newborns
- Continuous monitoring
- Advanced life support systems

2. Kangaroo Mother Care (KMC)

- Skin-to-skin contact
- Promotes thermal regulation and bonding
- Enhances breastfeeding

3. Use of Technology

- Pulse oximetry
- Incubators and ventilators
- Digital monitoring systems

NURSING INTERVENTIONS IN NEONATAL CARE**1. Assessment**

- Monitor temperature, heart rate, and respiration
- Observe feeding patterns
- Identify abnormal signs

2. Planning and Implementation

- Develop individualized care plans
- Ensure proper nutrition
- Maintain hygiene

3. Evaluation

- Assess response to treatment
- Modify care plan as needed

COMMUNITY-BASED NEONATAL CARE

Community health nurses play a vital role:

- Conduct home visits
- Educate mothers about newborn care
- Promote institutional deliveries
- Identify high-risk newborns

CASE STUDY**1. Case Description**

A preterm newborn (32 weeks gestation) was admitted with breathing difficulty and low birth weight.

2. Assessment Findings

- Respiratory distress
- Low body temperature

- Poor feeding

3. Diagnosis

- Respiratory Distress Syndrome with Low Birth Weight

4. Interventions

- Oxygen therapy and CPAP
- Thermal care using incubator
- Tube feeding initially
- Antibiotics for infection prevention

5. Outcome

After 3 weeks:

- Improved breathing
- Stable temperature
- Gradual weight gain

PREVENTIVE STRATEGIES

- Antenatal care for mothers
- Institutional deliveries
- Early breastfeeding
- Immunization
- Hygiene and sanitation

DISCUSSION

Neonatal care is a critical determinant of child survival and long-term health. Despite advancements, neonatal mortality remains a challenge, especially in low-resource settings. Early detection and timely management of common disorders can significantly reduce complications.

Nurses play a vital role in delivering quality neonatal care, both in hospitals and communities. Their responsibilities include monitoring, education, and coordination of care. Strengthening healthcare infrastructure and increasing awareness are essential for improving neonatal outcomes.

CONCLUSION

Neonatal care is essential for ensuring the survival and healthy development of newborns. Proper management of common newborn disorders, along with preventive strategies, can significantly reduce neonatal mortality. Nurses are key contributors to neonatal healthcare, providing continuous care and support to both infants and families.

Improving access to healthcare services, promoting awareness, and adopting modern technologies can further enhance neonatal care outcomes.

REFERENCES

1. Hockenberry, M. J., & Wilson, D. (2018). *Wong's Nursing Care of Infants and Children*. 11th ed., Elsevier, pp. 600–640.
2. World Health Organization (WHO). (2020). *Newborns: Improving Survival and Well-being*, pp. 15–40.
3. Ghai, O. P., Gupta, P., & Paul, V. K. (2017). *Ghai Essential Pediatrics*. 9th ed., CBS Publishers, pp. 160–210.
4. Park, K. (2021). *Park's Textbook of Preventive and Social Medicine*. 26th ed., Banarsidas Bhanot, pp. 620–650.
5. Cloherty, J. P., Eichenwald, E. C., & Hansen, A. R. (2018). *Manual of Neonatal Care*. 8th ed., Lippincott, pp. 75–120.
6. Ministry of Health and Family Welfare, India (2022). *Facility-Based Newborn Care Guidelines*, pp. 25–70.
7. UNICEF (2021). *Neonatal Health Report*, pp. 30–65.
8. Lawn, J. E., et al. (2014). Every Newborn: Progress and Challenges. *The Lancet*, 384(9938), pp. 189–205.
9. Sharma, P., & Roy, S. (2020). Neonatal Care Practices in India. *Indian Journal of Neonatal Nursing*, 6(2), pp. 55–62.

Cite as:

Sneha Joseph, Meenakshi Pillai, Ravi Prakash (2026). Neonatal Care and Common Newborn Disorders: A Comprehensive Nursing Approach to Early Life Survival. *International Journal of Pediatric Nursing and Gynaecology*, 4(1), 1-10.
<https://doi.org/10.5281/zenodo.20067863>