

## ***Effectiveness of Evidence-Based Nursing Interventions in Chronic Disease Management: A Comprehensive Clinical Approach***

***Dr. Anjana K. Nair<sup>1</sup>, Febin Thomas<sup>2</sup>***

*Lecturer<sup>1</sup>, Student<sup>2</sup>*

*Department of Medical-Surgical Nursing*

*Malabar College of Nursing*

***Corresponding Author Email: febinthomas2@gmail.com<sup>2</sup>***

### ***ABSTRACT***

*Chronic diseases represent a major global health burden, accounting for significant morbidity, mortality, and healthcare costs. Evidence-based nursing interventions (EBNIs) have emerged as a cornerstone in improving patient outcomes, enhancing quality of care, and optimizing healthcare delivery systems. This paper explores the effectiveness of EBNIs in chronic disease management, focusing on conditions such as diabetes mellitus, hypertension, cardiovascular diseases, and chronic respiratory disorders. The study reviews various nursing strategies including patient education, self-management support, lifestyle modification, medication adherence, and multidisciplinary collaboration. The findings highlight that evidence-based nursing practices significantly improve clinical outcomes, reduce hospital readmissions, and enhance patient satisfaction. The integration of research evidence into clinical nursing practice is essential for sustainable and patient-centered care in chronic disease management.*

***KEYWORDS:*** *Evidence-based nursing, chronic disease, patient care, nursing interventions, healthcare outcomes*

### **INTRODUCTION**

Chronic diseases such as diabetes, hypertension, cardiovascular disorders, and chronic obstructive pulmonary disease (COPD) are long-term conditions that require continuous medical attention and management. According to global health data, chronic illnesses account

for nearly 70% of deaths worldwide. In India, the burden of non-communicable diseases (NCDs) has been steadily increasing due to urbanization, lifestyle changes, and aging populations.

Nurses play a pivotal role in managing chronic diseases by providing continuous care, monitoring patient progress, and implementing therapeutic interventions. Evidence-based nursing (EBN) involves the integration of the best available research evidence with clinical expertise and patient preferences to deliver high-quality care.

This paper aims to evaluate the effectiveness of evidence-based nursing interventions in chronic disease management and to identify key strategies that improve patient outcomes.

### **OBJECTIVES OF THE STUDY**

1. To assess the role of evidence-based nursing interventions in chronic disease management
2. To evaluate the impact of nursing interventions on patient outcomes
3. To identify effective nursing strategies for improving quality of life in chronic illness
4. To explore challenges in implementing evidence-based practices in clinical settings

### **METHODOLOGY**

This study is based on a **systematic literature review** and analytical approach. Relevant research articles, clinical guidelines, and nursing studies published between 2010 and 2024 were reviewed.

#### **Inclusion Criteria**

- Studies focusing on chronic disease management
- Research involving nursing interventions
- Peer-reviewed journal articles

#### **Exclusion Criteria**

- Non-clinical studies
- Articles without clear methodology
- Studies unrelated to nursing practice

**CONCEPT OF EVIDENCE-BASED NURSING**

Evidence-Based Nursing (EBN) is a problem-solving approach that integrates:

- Best available research evidence
- Clinical expertise
- Patient values and preferences

**Core Components of EBN**

*Table: 1*

<b>Component</b>	<b>Description</b>
Research Evidence	Scientific findings from clinical studies
Clinical Expertise	Skills and experience of nurses
Patient Preferences	Individual needs and values

EBN ensures that nursing care is scientifically sound, efficient, and patient-centered.

**CHRONIC DISEASES AND THEIR IMPACT**

Chronic diseases are long-lasting conditions that often require lifelong management. They significantly affect physical, psychological, and social well-being.

**Common Chronic Diseases**

*Table: 2*

<b>Disease</b>	<b>Key Characteristics</b>
Diabetes Mellitus	High blood glucose levels
Hypertension	Elevated blood pressure
Cardiovascular Diseases	Heart and vascular disorders
COPD	Chronic respiratory limitation

**Impact on Patients**

- Reduced quality of life
- Increased healthcare costs
- Emotional and psychological stress
- Functional limitations

## **EVIDENCE-BASED NURSING INTERVENTIONS IN CHRONIC DISEASE MANAGEMENT**

### **1. Patient Education**

Patient education is a fundamental nursing intervention. Educating patients about their condition, treatment, and lifestyle changes empowers them to manage their health effectively.

#### **Key Aspects:**

- Disease awareness
- Medication instructions
- Dietary guidance
- Exercise recommendations

### **2. Self-Management Support**

Self-management involves the patient actively participating in their care.

#### **Nursing Strategies:**

- Goal setting
- Monitoring symptoms
- Encouraging adherence
- Motivational counseling

### **3. Medication Adherence**

Non-adherence to medication is a major challenge in chronic disease management.

#### **Nursing Interventions:**

- Simplifying medication schedules
- Educating patients about side effects
- Using reminders and follow-ups

### **4. Lifestyle Modification**

Lifestyle changes play a crucial role in managing chronic diseases.

#### **Interventions include:**

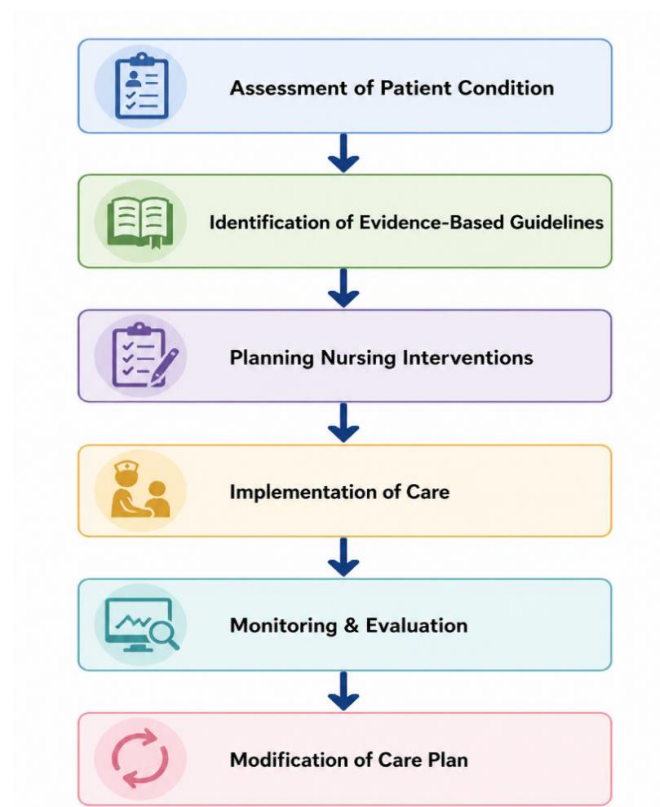
- Promoting healthy diet
- Encouraging physical activity
- Smoking cessation
- Stress management

## 5. Multidisciplinary Collaboration

Effective chronic disease management requires coordination among healthcare professionals.

### Team Members:

- Physicians
- Nurses
- Dieticians
- Physiotherapists



*Figure 1: Evidence-Based Chronic Care Model*

## ROLE OF NURSES IN CHRONIC DISEASE MANAGEMENT

Nurses act as caregivers, educators, coordinators, and advocates.

### Key Roles:

- Monitoring patient health status
- Providing emotional support
- Ensuring continuity of care
- Facilitating communication

**BENEFITS OF EVIDENCE-BASED NURSING INTERVENTIONS**

*Table: 3*

<b>Benefit</b>	<b>Outcome</b>
Improved Clinical Outcomes	Better disease control
Reduced Hospitalization	Lower readmission rates
Enhanced Patient Satisfaction	Improved trust in care
Cost-Effective Care	Reduced healthcare expenses

**CHALLENGES IN IMPLEMENTING EVIDENCE-BASED NURSING**

Despite its advantages, several barriers exist:

- Lack of time and resources
- Limited access to research
- Resistance to change
- Inadequate training



*Figure 2: Barriers to Evidence-Based Nursing*

## PRELIMINARY FINDINGS

The review indicates that evidence-based nursing interventions:

- Improve patient adherence to treatment
- Enhance disease control outcomes
- Reduce complications
- Promote patient independence

## DISCUSSION

The findings of this review clearly demonstrate that evidence-based nursing interventions (EBNIs) play a transformative role in chronic disease management. Chronic illnesses require long-term, structured, and patient-centered care approaches, and EBN provides a scientifically validated framework for achieving these goals.

One of the most significant outcomes observed is the improvement in **patient adherence**. Nurses, through continuous education and counseling, help patients understand the importance of medication, diet, and lifestyle changes. Studies have shown that patients who receive structured education from nurses exhibit higher compliance rates compared to those who receive routine care.

Another important aspect is the **reduction in hospital readmissions**. Evidence-based interventions such as follow-up care, telephonic monitoring, and home visits ensure early detection of complications. This proactive approach reduces the need for emergency care and hospitalizations.

The integration of **self-management strategies** has also proven highly effective. Patients with chronic diseases often struggle with long-term adherence, but when nurses empower them with skills like symptom monitoring and decision-making, outcomes improve significantly. For example, diabetic patients trained in self-monitoring of blood glucose show better glycemic control.

Furthermore, **multidisciplinary collaboration** enhances the quality of care. Nurses act as coordinators, ensuring that treatment plans are followed holistically. Collaboration between physicians, dietitians, and physiotherapists results in comprehensive care delivery.

However, despite these benefits, challenges persist. The lack of adequate training in research utilization among nurses remains a major barrier. Many healthcare settings, especially in developing regions, face limitations in resources and infrastructure, which restrict the implementation of EBN practices.

**CASE-BASED INSIGHT**

**Case Example: Diabetes Management**

*Table: 3*

Parameter	Before EBN Intervention	After EBN Intervention
HbA1c Level	9.2%	7.1%
Medication Adherence	Irregular	Regular and consistent
Lifestyle Practices	Poor	Improved diet & exercise
Hospital Visits	Frequent	Reduced

**Interpretation:**

The application of structured education, regular follow-ups, and lifestyle counseling significantly improved patient outcomes.

**COMPARATIVE ANALYSIS OF INTERVENTIONS**

*Table: 4*

Intervention Type	Effectiveness Level	Key Outcome
Patient Education	High	Improved awareness
Medication Adherence Support	High	Reduced complications
Lifestyle Modification	Moderate to High	Better long-term control
Telehealth Monitoring	Moderate	Improved follow-up
Multidisciplinary Care	Very High	Holistic improvement

## INTEGRATED CHRONIC CARE CYCLE

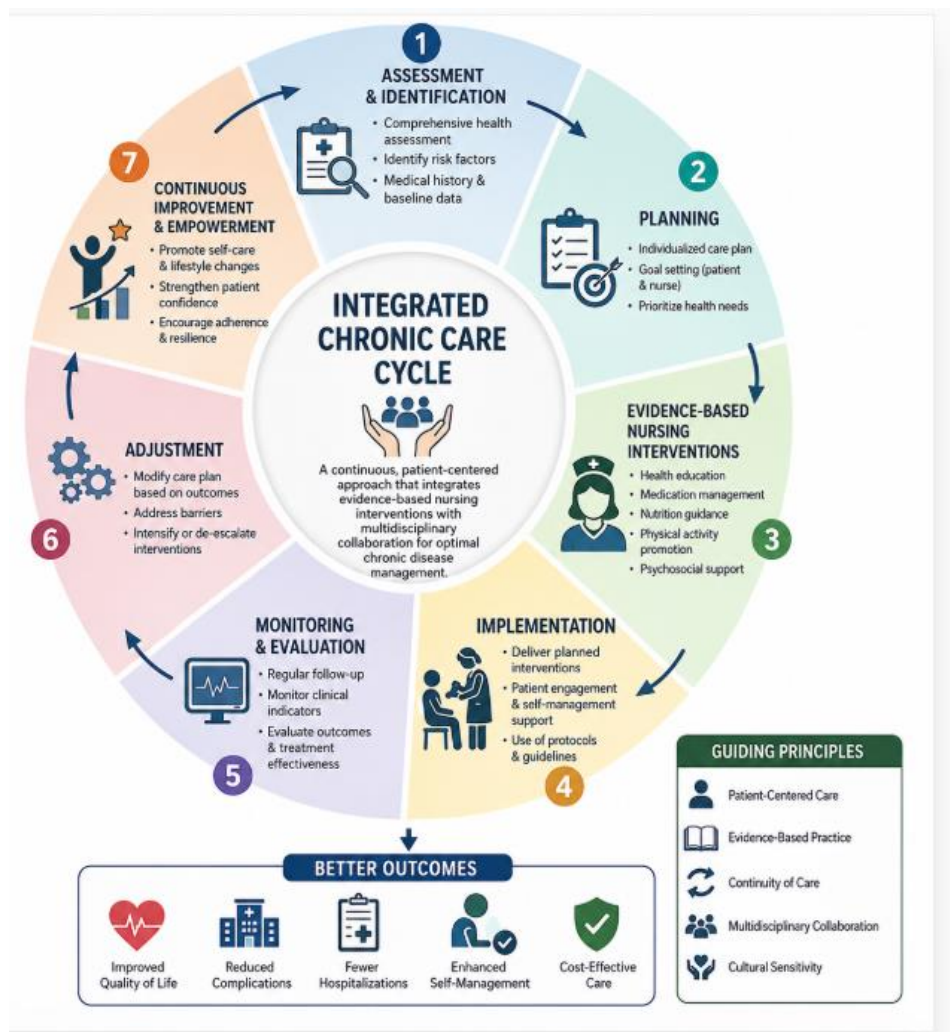


Figure: 2

## IMPLICATIONS FOR NURSING PRACTICE

The study emphasizes the need for:

- Incorporating EBN in daily clinical practice
- Strengthening nursing education with research training
- Promoting leadership roles for nurses in care planning
- Encouraging patient-centered care models

Nurses should be trained to critically evaluate research and apply findings in real-world clinical settings.

## RECOMMENDATIONS

1. **Training Programs:** Regular workshops on evidence-based practices
2. **Policy Support:** Institutional guidelines promoting EBN
3. **Research Access:** توفير journals and digital libraries
4. **Technology Use:** Adoption of telehealth and digital monitoring tools
5. **Patient Engagement:** Encouraging active participation in care

## CONCLUSION

Evidence-based nursing interventions are highly effective in managing chronic diseases. They not only improve clinical outcomes but also enhance patient satisfaction and reduce healthcare costs. Nurses play a central role in implementing these interventions, acting as educators, caregivers, and coordinators

The integration of scientific evidence into nursing practice ensures high-quality, safe, and patient-centered care. However, to maximize the benefits, healthcare systems must address barriers such as lack of training, limited resources, and resistance to change.

In conclusion, evidence-based nursing is not just an approach but a necessity for modern healthcare systems, particularly in the management of chronic diseases.

## REFERENCES

1. Polit, D.F., & Beck, C.T. (2017). *Nursing Research: Generating and Assessing Evidence for Nursing Practice*. 10th ed., Wolters Kluwer, pp. 45–78.
2. Melnyk, B.M., & Fineout-Overholt, E. (2019). *Evidence-Based Practice in Nursing & Healthcare*. 4th ed., Lippincott Williams & Wilkins, pp. 112–150.
3. World Health Organization. (2020). *Noncommunicable Diseases Country Profiles*. Geneva: WHO Press, pp. 23–30.
4. Black, J.M., & Hawks, J.H. (2018). *Medical-Surgical Nursing: Clinical Management*. 9th ed., Elsevier, pp. 210–245.
5. Smeltzer, S.C., Bare, B.G. (2016). *Brunner & Suddarth's Textbook of Medical-Surgical Nursing*. 14th ed., Wolters Kluwer, pp. 980–1025.
6. Bulechek, G.M., Butcher, H.K., Dochterman, J.M. (2017). *Nursing Interventions Classification (NIC)*. 7th ed., Elsevier, pp. 56–89.

7. Wagner, E.H. (2011). Chronic Care Model. *Health Affairs*, 20(6), pp. 64–78.
8. Orem, D.E. (2001). *Nursing: Concepts of Practice*. 6th ed., Mosby, pp. 134–160.
9. Indian Council of Medical Research (ICMR). (2021). *Guidelines for Management of Chronic Diseases*. New Delhi, pp. 10–25.