

State-Space Modeling of Electrical Circuits: A Modern Framework for Dynamic System Analysis

Authors: S. Ramesh Babu¹

Assistant Professor, Department of Electrical and Electronics Engineering

Arignar Anna Government Arts College, Namakkal, Tamil Nadu, India

Email: rameshbabu.eee@agac.edu.in¹

Authors: K. Deepa²

Associate Professor, Department of Electrical Engineering

Kongu Arts and Science College, Erode District, Tamil Nadu, India

Email: deepa.control84@gmail.com²

Abstract

The increasing complexity of modern electrical and electronic systems demands analytical methods capable of accurately representing dynamic behavior under varying operating conditions. State-space modeling has emerged as a powerful and systematic approach for analyzing time-domain behavior of electrical circuits, particularly those involving energy storage elements and dynamic interactions. Unlike classical methods based on transfer functions, state-space representation provides a complete description of internal system dynamics using first-order differential equations. This paper presents a comprehensive study of state-space modeling of electrical circuits. Fundamental concepts, mathematical formulation, selection of state variables, and modeling of linear and nonlinear circuits are discussed in detail. The advantages of state-space methods in control-oriented analysis, simulation, and system design are highlighted. Illustrative tables and two-dimensional figures are included to enhance clarity. The paper emphasizes the importance of state-space modeling as a unifying framework for circuit analysis, control, and modern engineering applications.

Keywords: *State-space modeling, electrical circuits, dynamic systems, state variables, time-domain analysis, control systems*

1. Introduction

Electrical circuits containing inductors, capacitors, and controlled sources exhibit dynamic behavior that evolves over time. Traditional circuit analysis techniques such as mesh analysis, nodal analysis, and Laplace transform-based transfer function methods have long been used to study such systems. While effective for many applications, these approaches often focus on input-output relationships and provide limited insight into the internal dynamics of the system.

State-space modeling addresses these limitations by describing a system in terms of state variables that capture its internal energy storage and dynamic behavior. This approach has become especially important in modern engineering fields such as power electronics, electric drives, renewable energy systems, and control engineering. State-space models are well suited for computer simulation, digital control design, and multi-input multi-output system analysis.

This paper explores the principles and procedures of state-space modeling of electrical circuits. Emphasis is placed on conceptual understanding, mathematical formulation, and practical relevance. By integrating circuit theory with system dynamics, state-space modeling offers a versatile framework for analyzing and designing modern electrical systems.

2. Fundamentals of State-Space Representation

2.1 Concept of State Variables

State variables are a set of variables that completely describe the current condition of a system. In electrical circuits, state variables are typically associated with energy storage elements.

- Inductor current
- Capacitor voltage

Knowledge of state variables at a given time, along with input signals, is sufficient to determine the future behavior of the system.

2.2 General State-Space Form

A linear time-invariant system can be represented in state-space form as:

$$\begin{aligned} & [\\ \dot{x}(t) &= A x(t) + B u(t) \\ &] \\ & [\\ y(t) &= C x(t) + D u(t) \\ &] \end{aligned}$$

where $x(t)$ is the state vector, $u(t)$ is the input vector, $y(t)$ is the output vector, and A , B , C , and D are system matrices.

3. Selection of State Variables in Electrical Circuits

The choice of state variables is a crucial step in state-space modeling.

3.1 Energy Storage Elements

In electrical circuits:

- Inductor currents are chosen as state variables
- Capacitor voltages are chosen as state variables

This choice ensures that the resulting equations are first-order differential equations.

3.2 Minimal State Representation

The number of state variables equals the number of independent energy storage elements. Redundant elements do not contribute additional states and must be handled carefully.

Table 1: Common Circuit Elements and State Variables

Circuit Element	State Variable
Inductor	Current
Capacitor	Voltage
Resistor	Not a state
Independent source	Input

4. State-Space Modeling Procedure

State-space modeling of electrical circuits follows a systematic procedure.

1. Identify energy storage elements
2. Select appropriate state variables

3. Apply Kirchhoff's laws
4. Express equations in standard state-space form

This approach ensures consistency and completeness in modeling.

5. Modeling of Linear Electrical Circuits

5.1 RLC Circuit Example

Consider a series RLC circuit excited by a voltage source. Choosing capacitor voltage and inductor current as state variables, the circuit equations can be written in state-space form.

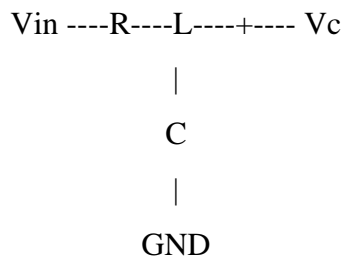
This representation clearly shows how energy exchanges between the inductor and capacitor while being dissipated by the resistor.

5.2 Advantages Over Transfer Functions

State-space models capture internal dynamics and are valid for zero and non-zero initial conditions, unlike transfer functions that assume zero initial energy.

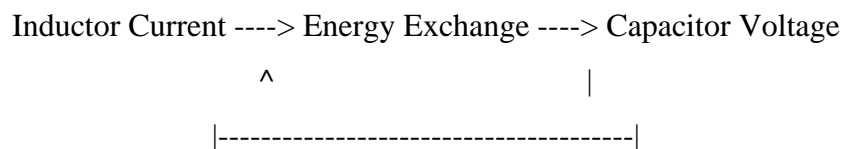
6. Two-Dimensional Illustrations

Figure 1: Series RLC Circuit Representation



This figure shows a simple dynamic circuit suitable for state-space modeling.

Figure 2: State Variable Interaction



This illustration highlights the dynamic coupling between state variables.

7. Modeling of Nonlinear Electrical Circuits

7.1 Sources of Nonlinearity

Nonlinear behavior arises from elements such as diodes, transistors, and magnetic saturation in inductors.

7.2 State-Space Representation of Nonlinear Circuits

Nonlinear circuits are modeled using nonlinear differential equations:

$$\begin{aligned} & [\\ & \dot{\mathbf{x}}(t) = \mathbf{f}(\mathbf{x}(t), \mathbf{u}(t)) \\ &] \end{aligned}$$

Although more complex, such models are essential for accurate representation of practical systems.

8. State-Space Modeling in Power Electronics

Power electronic converters operate through rapid switching and energy transfer.

8.1 Averaged State-Space Models

To simplify analysis, switching circuits are often represented using averaged state-space models. These models approximate the dynamic behavior over one switching period.

8.2 Control-Oriented Modeling

State-space models form the foundation for designing controllers such as proportional-integral controllers and state feedback controllers in power electronic systems.

9. Advantages of State-Space Modeling

State-space representation offers several significant advantages.

Advantages

- Applicable to multi-input multi-output systems
- Suitable for time-domain analysis
- Compatible with digital simulation
- Enables modern control design

Table 2: Comparison of Analysis Methods

Feature	Transfer Function	State-Space
Internal dynamics	Limited	Complete
Initial conditions	Difficult	Direct
MIMO systems	Not suitable	Suitable

10. Applications of State-Space Modeling

10.1 Control System Design

State-space models are widely used in designing state feedback and observer-based controllers.

10.2 Electric Drives

Dynamic modeling of motors and drives relies heavily on state-space techniques for performance analysis and control.

10.3 Renewable Energy Systems

Photovoltaic inverters and wind energy conversion systems use state-space models for stability and control studies.

11. Challenges and Limitations

Despite its strengths, state-space modeling has certain challenges.

- Mathematical complexity for large systems
- Difficulty in selecting appropriate state variables
- Increased computational effort for nonlinear models

However, these challenges are mitigated by modern computational tools.

12. Emerging Trends

Recent research focuses on combining state-space modeling with artificial intelligence and data-driven approaches. Reduced-order modeling techniques are also gaining importance for real-time control and simulation of large-scale electrical systems.

13. Conclusion

State-space modeling provides a powerful and comprehensive framework for analyzing electrical circuits with dynamic behavior. By focusing on internal states rather than just input-

output relationships, it offers deeper insight into system dynamics and control possibilities. The versatility of state-space methods makes them indispensable in modern electrical engineering applications, ranging from power electronics to renewable energy systems. As computational tools and control techniques continue to evolve, state-space modeling will remain a cornerstone of advanced circuit analysis and design.

References

1. Kailath, T., *Linear Systems*, Prentice Hall, Englewood Cliffs, 1980, pp. 32–78.
2. Ogata, K., *Modern Control Engineering*, Prentice Hall, New Delhi, 2010, pp. 211–258.
3. Dorf, R. C., and Bishop, R. H., *Modern Control Systems*, Pearson Education, Delhi, 2012, pp. 145–192.
4. Desoer, C. A., and Kuh, E. S., *Basic Circuit Theory*, McGraw-Hill, New York, 1969, pp. 389–432.
5. Chen, C. T., *Linear System Theory and Design*, Oxford University Press, New York, 1999, pp. 101–146.
6. Erickson, R. W., and Maksimovic, D., *Fundamentals of Power Electronics*, Springer, New York, 2001, pp. 173–219.
7. Khalil, H. K., *Nonlinear Systems*, Prentice Hall, Upper Saddle River, 2002, pp. 57–104.
8. Franklin, G. F., Powell, J. D., and Emami-Naeini, A., *Feedback Control of Dynamic Systems*, Pearson Education, Delhi, 2015, pp. 321–368.
9. Kuo, B. C., *Automatic Control Systems*, Wiley, New York, 1995, pp. 412–455.